

# QUICKSTART

## Puzzi 10/1 - Puzzi 10/2



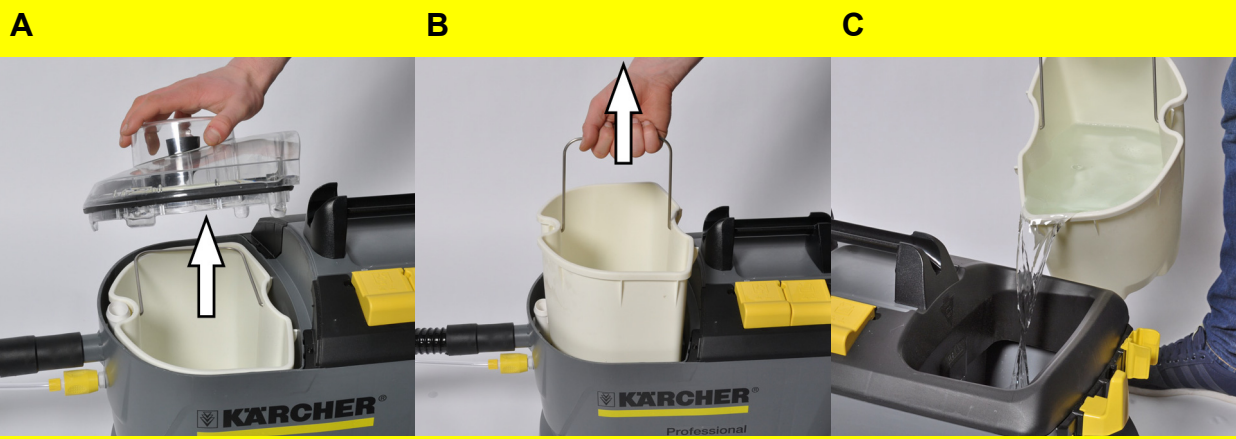
### -WARNING

These are only brief instructions! Please read the operating instructions accompanying the appliance prior to using or maintaining the appliance.

The non-compliance with the operating and safety instructions may lead to damage of the appliance and to risks for the operator and other persons.

## Start up

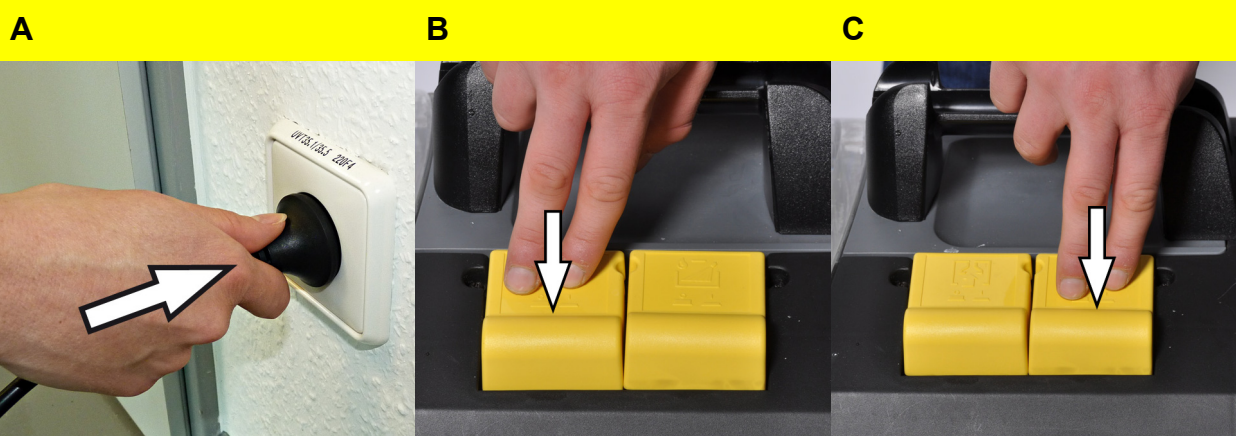
1



- A Remove the cover of the wastewater tank.
- B Remove waste water tank.
- C Fill detergent solution into the fresh water reservoir. The fill level must not exceed the "MAX" mark.

## Operation

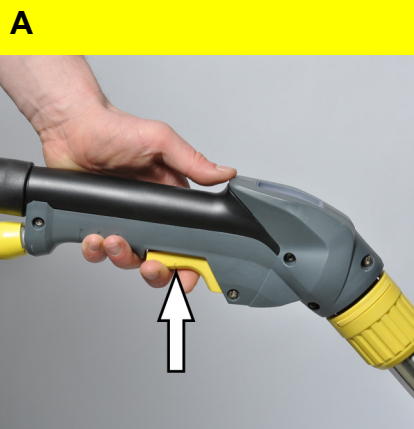
1



### Turning on the Appliance

- A Plug in the mains plug.
- B Press the suction switch to turn on the suction turbine.
- C Press the spray switch to switch on the spray pump.

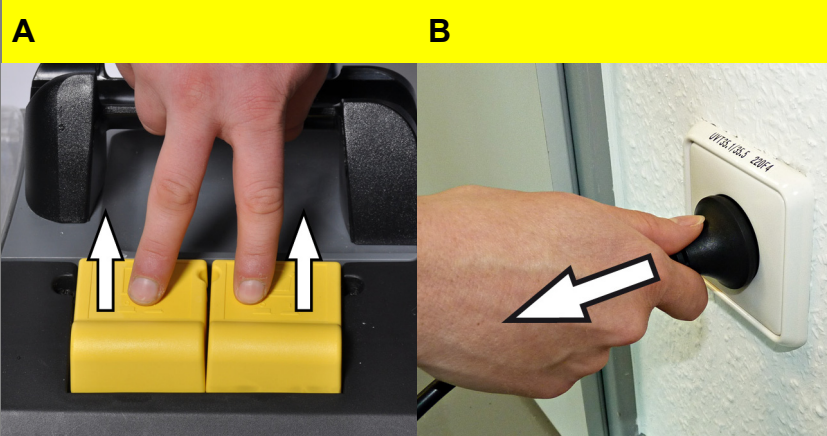
2



- A Operate the lever on the manifold in order to spray the cleaning solution. Run across the surface to be cleaned in overlapping paths. Pull the nozzle backwards (do not push).
- B Press the suction switch to turn on the suction turbine.
- C Press the spray switch to switch on the spray pump.

## Finish operation

1

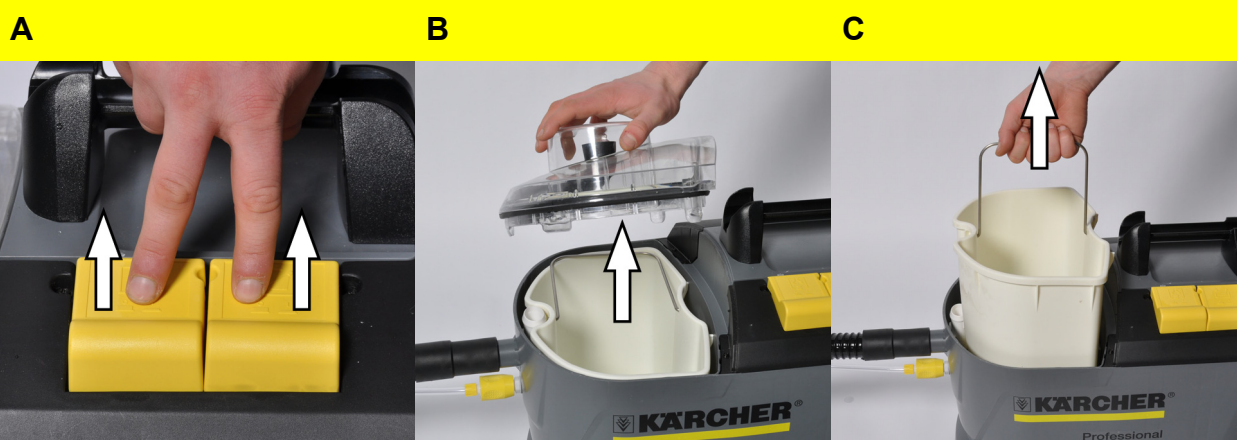


### Turn off the appliance

- A Switch off the spray and suction switches.
- B Pull out the mains plug.

## Finish operation

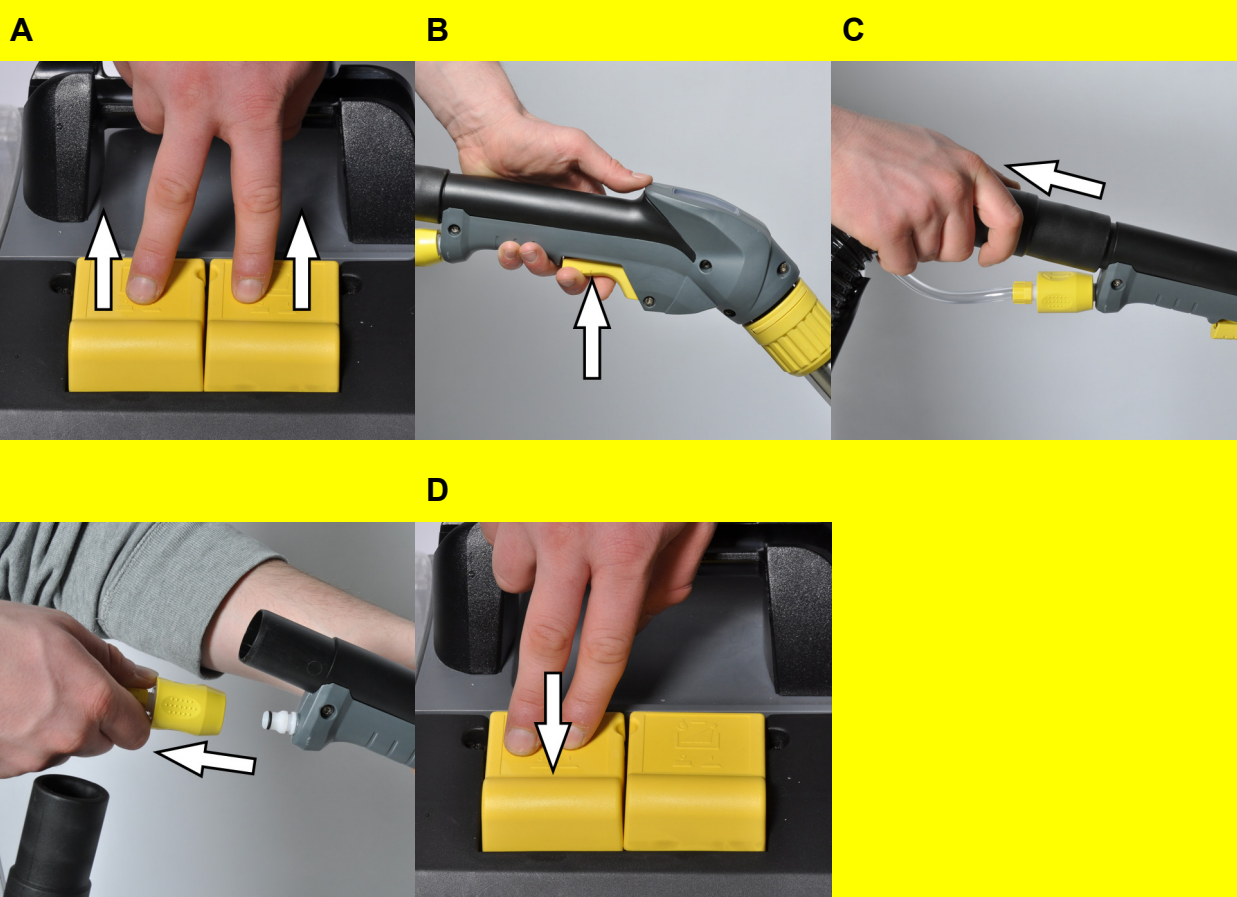
### 2



#### Empty wastewater container

- A If the dirt water reservoir is full, switch off the suction and spray switches.
- B Remove the lid.
- C Remove the wastewater container from the appliance and drain it.

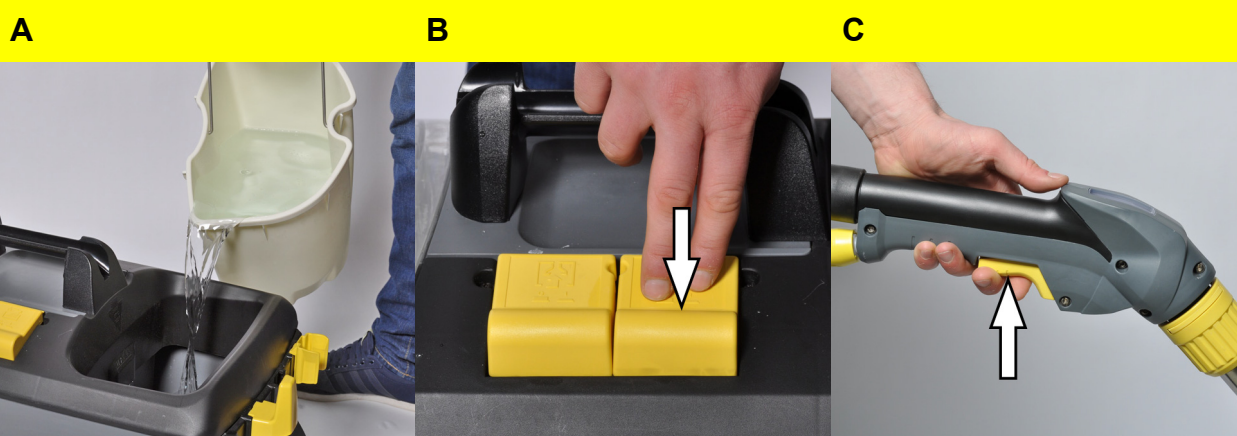
### 3



#### Empty the fresh water reservoir

- A Turn off the appliance.
- B Shortly activate the lever on bender to decrease the pressure.
- C Separate bender from the spray/suction hose. Insert the suction hose into the fresh water reservoir.
- D Press the suction switch to turn on the suction turbine.

### 4



#### After each operation

- A Flush appliance.
- B Empty the wastewater container and clean it under running water.
- C Empty the fresh water reservoir. Suck the remaining fresh water out of the tank.
- D Clean the outside of the appliance with a damp cloth.
- E Remove all water from the appliance prior to longer periods of non-use to avoid offensive odours.
- F Allow appliance to dry thoroughly: Remove or move lid sideways.

### 6



#### Transport

- A For transport, place suction pipe on the carrying handle and place the spray/suction hose on top of the appliance. Wind up the mains cable and hook it into the cable hook.